

# شرکت تولیدی روتاری جوینت رادان ( دقیق ساز اتصال )

## ROTARY JOINTS METAL HOSE



✉ rotaryjointt@gmail.com  
✉ rotaryjoint@yahoo.com

🌐 http://rotaryjointt.com  
🌐 http://rotaryjointt.ir

اولین تولید کننده انواع روتاری جوینت و تعمیرات در ایران  
مخصوص روغن داغ تا دمای 350 درجه دو کاناله  
مخصوص بخار تا دمای 350 درجه دو کاناله

جهت استفاده در تمام صنایع فولاد سازی ، ورق سازی ، لاستیک سازی  
کاغذ و مقوا ، نساجی، غذایی، چرم سازی، صنایع چاپ بسته بندی، نفت،  
گاز، پتروشیمی...

دفتر مرکزی 88485627 آدرس دفتر مرکزی: میدان فاطمی، میدان گلها، بلوار مرداد، کوچه شاهرخی شرقی، پلاک ۲  
88485628 مهندس رادان 09122728344



شرکت تولیدی روتاری جوینت رادان (دقیق ساز اتصال)

تولید کننده انواع روتاری جوینت فشار قوی در ایران

هدف ما تولید روتاری ملی، افتخار ملی، کیفیت جهانی

کیفیت شعار ما نیست اعتبار ماست تجربه چند نسل در اختیار ماست

شرکت تولیدی روتاری جوینت رادان (دقیق ساز اتصال) با همکاری متخصصین مجرب در زمینه طراحی و ساخت انواع روتاری جوینت آب، بخار، روغن داغ، هوا، باد فعالیت خود را در تولید روتاری جوینت از سال ۱۳۶۵ با هدف خود کفایی آغاز کرد.

شرکت تولیدی دقیق ساز اتصال در زمینه طراحی و ساخت انواع روتاری جوینت آب، بخار، روغن داغ، هوا، باد و لودر سائز های مختلف با بیش از ۳۵ سال سابقه درخشان دارای خط تولید روتاری جوینت مجهز به ماشین آلات CNC روز دنیا می باشد. تمامی محصولات این شرکت در پروسه تولید پس از تست های QC روغن کاری و در محیطی تمیز بسته بندی و در اختیار مصرف کننده قرار می گیرد و با هدف ارائه خدمات با کیفیت و قیمت مناسب فعالیت می نماید.

هدف ما با ارائه طرح های نو و مطمئن با بهره گیری از فناوری های روز دنیا و ارائه محصولات قابل رقابت با نوع غربی جهت جلب رضایت شما می باشد. راز موفقیت محصولات این شرکت انتخاب صحیح و علمی، متریال ها، طراحی به روز و اعمال استانداردهای کنترل کیفی می باشد. تمامی این عوامل در کنار دانش فنی چندین ساله بنیان گذاران این شرکت دلیل محکمی بر گارانتی محصولات روتاری جوینت می باشد. هدف ما بیشتر از اکنون بودن است.

تلفن 02188485627 فکس 02188485628

0912 2728344

مهندس محمد رادان - مدیر عامل و عضو هیئت مدیره

 daghighsazetesal.co@gmail.com

 Rotary-joint

www.daghighsazetesal.ir

## معرفی روتاری جوینت و کاربرد آن در صنعت

روتاری جوینت قطعه‌ای است که مایعات یا گاز را با فشار منتقل می‌کند. ویک والو انتقال دهنده سیال (مایعات، هوا، بخار، روغن داغ و گاز) به شکل (سرد و گرم) می‌باشد. این قطعه بسته به نوع کاربرد سیالی که در حال چرخش از خود عبور می‌دهد به تیپ‌های مختلفی تقسیم می‌شوند. فشار کاری، میزان دما و سرعت دورانی شافت RPM (دور در هر دقیقه) از مهمترین شاخص‌های انتخاب روتاری جوینت به حساب می‌آیند و در تجهیزات بسیار زیادی از این قطعه استفاده می‌شود.



روتاری جوینت‌ها انواع و مدل‌های مختلفی دارند بدنه روتاری جوینت می‌تواند از چدن، برنج، آلومینیوم، استیل، فولاد و سایر فلزات ساخته می‌شود. روتاری جوینت‌ها را از روی تعداد پورت می‌توان به تک پورت و مولتی پورت تقسیم کرد. روتاری جوینت‌ها در طیف وسیعی صنایع مختلفی اعم از صنایع فولاد، کاغذسازی، کارتن سازی، نساجی، چاپ، تولید پلاستیک، صنایع غذایی، ماشین سازی، صنایع خودرو، نفت و گاز، پتروشیمی، ماشین آلات معدن، صنعت سیمان و کاربرد دارند.



روتاری جوینت‌های گروه صنعتی دقیق ساز اتصال در دو دسته با سرعت دورانی پایین (از نوع چدنی) کمتر از ۱۵۰ دور بر دقیقه و روتاری جوینت‌ها با سرعت دورانی بالا (از نوع برنجی) حداکثر ۷۰۰۰ RPM ساخته می‌شود.

تمام روتاری جوینت‌های ساخته شده به صورت صد در صد با فشار ۱۵ بار و سرعت دورانی (RPM ۵۰) از نوع چدنی و (RPM ۵۰۰) برای گروه روتاری جوینت‌های برنجی به مدت ۱۵ دقیقه تست می‌شوند. پشتیبانی قوی و گارانتی معتبر در کنار خدمات پس از فروش مطمئن باعث گردیده هم اکنون محصولات این شرکت در بازارهای ایران یکی از خوش‌نام‌ترین و با کیفیت ترین محصولات شناخته شود.

این شرکت تولیدی با سابقه درخشان به عنوان تأمین کننده کارخانجات فولادسازی، لاستیک‌سازی، نفت و گاز و پتروشیمی، کاغذسازی و ... در ایران افتخار خدمت‌گذاری به صنعت ایران عزیزمان را دارد.

### توانگر و ماندگار





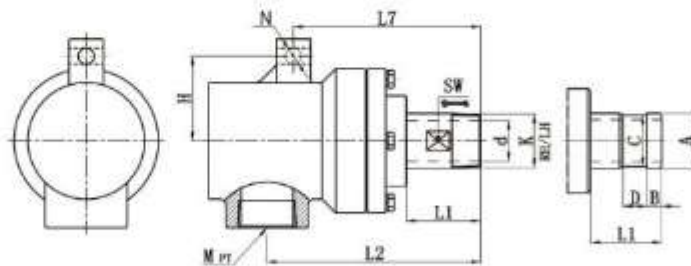
## TX/MR2 series of rotary joints

- Convex spherical seal
- Standard carbon graphite sealing technology
- Multiple widely spaced graphite bearing support
- Precision cast iron shell
- Mono-flow and dual-flow design
- Automatic centering
- Surface treatment of the rotating shaft for abrasion resistance and corrosion resistance
- Preventive maintenance design with sealing abrasion scale line
- Strong deflection adaptability

### Technical Parameter

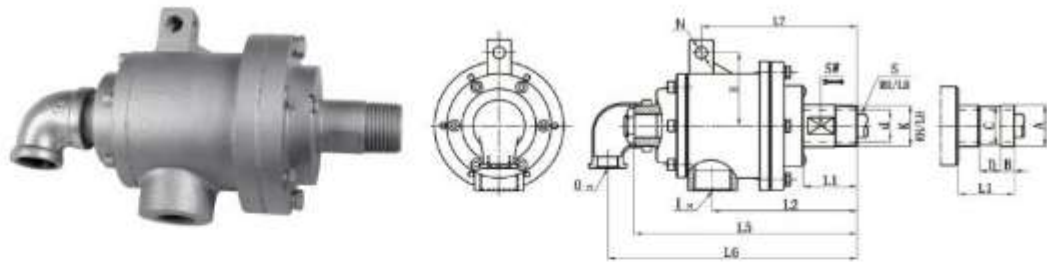
Media	Size	Max.Speed	Max.pressure	Max.Temperature
Steam	20A-50A	200rpm	1.8Mpa	220℃
Oil	20A-50A	200rpm	1.8Mpa	350℃

Mono flow



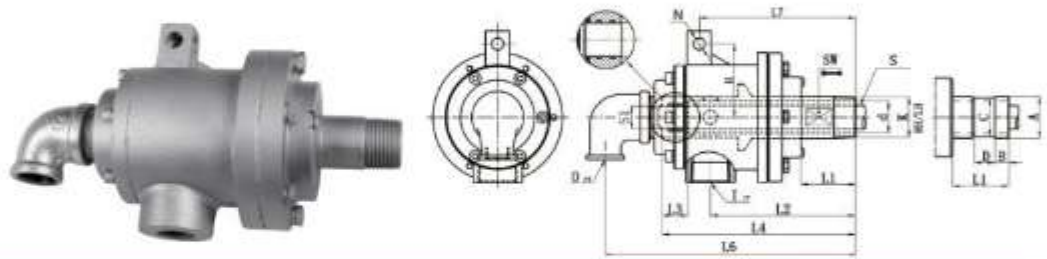
Model	K	M	d	L1	L2	L7	N	H	SW	A	B	C	D
20A	R3/4"	Rc3/4"	18	46	141	125	10	56	24	26	11	24	16
25A	R1"	Rc1"	23.5	52	146	131	12	60	32	34	12	32	18
32A	R1-1/4"	Rc1-1/4"	30	55	161	140	14	68	39	40	13	38	20
40A	R1-1/2"	Rc1-1/2"	36	65	186	163	14	74	45	47.8	13	45	20
50A	R2"	Rc2"	45	71	212	170	14	97	58	60	16	57	24

Dual flow  
fixed internal pipe



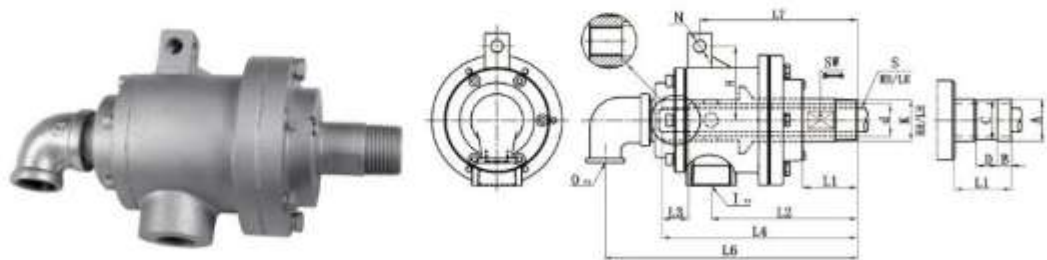
Model	K	I	O	S	d	L1	L2	L5	L6	L7	N	SW	H	A	B	C	D
25A	R1"	Rc3/4"	Rc1/2"	Rp3/8"	23.5	52	141	219	236	153	12	32	66	34	12	32	18
32A	R1-1/4"	Rc1"	Rc1/2"	Rp1/2"	30	55	159	243	263	171	14	39	78	40	13	38	20
40A	R1-1/2"	Rc1-1/4"	Rc3/4"	Rp3/4"	36	65	171	266	288	187	14	46	85	47.8	13	45	20
50A	R2"	Rc1-1/2"	Rc1"	Rp1"	45	71	196	297	322	213	14	57	93	60	16	57	24

Dual flow  
rotating internal pipe RN



Model	K	I	O	S1	d	L1	L2	L3	L4	L6	L7	N	SW	H	A	B	C	D
25A	R1"	Rc3/4"	Rc1/2"	16	23.5	52	141	20	182	236	153	12	32	66	34	12	32	18
32A	R1-1/4"	Rc1"	Rc1/2"	20	30	55	159	25	204	263	171	14	39	78	40	13	38	20
40A	R1-1/2"	Rc1-1/4"	Rc3/4"	25	36	65	171	30	224	288	187	14	46	85	47.8	13	45	20
50A	R2"	Rc1-1/2"	Rc1"	32	45	71	196	40	253	322	213	14	57	93	60	16	57	24

Dual flow  
rotating internal pipe RT



Model	K	I	O	S	d	L1	L2	L3	L4	L6	L7	N	SW	H	A	B	C	D
25A	R1"	Rc3/4"	Rc1/2"	Rp3/8"	23.5	52	141	20	182	236	153	12	32	66	34	12	32	18
32A	R1-1/4"	Rc1"	Rc1/2"	Rp1/2"	30	55	159	25	204	263	171	14	39	78	40	13	38	20
40A	R1-1/2"	Rc1-1/4"	Rc3/4"	Rp3/4"	36	65	171	30	224	288	187	14	46	85	47.8	13	45	20
50A	R2"	Rc1-1/2"	Rc1"	Rp1"	45	71	196	40	253	322	213	14	57	93	60	16	57	24

Except for the above product specifications, our company's product can also be customized according to the user's requirements; Specifications are subject to change without notice.



## MXQ series of rotary joints

- Convex or concave spherical seal
- Standard antimony impregnated graphite or carbon graphite sealing technology
- Double widely spaced graphite bearing support
- Precision cast iron or precision cast stainless steel shell
- Dual-flow design
- Surface treatment of the rotating shaft for abrasion resistance and corrosion resistance
- Surface treatment of the rotating shaft for abrasion resistance and corrosion resistance
- Automatic centering

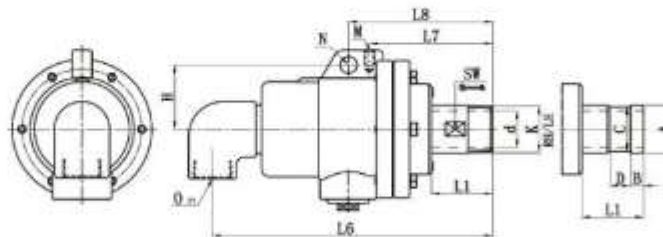
carbon graphite sealing technology  
 ort  
 steel shell

abrasion resistance and corrosion resistance  
 abrasion resistance and corrosion resistance

### Technical Parameter

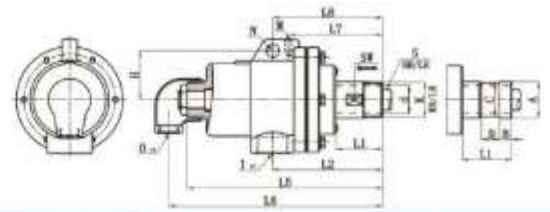
Media	Size	Max.Speed	Max.pressure	Max.Temperature
Steam	20A-80A	200rpm	1.8Mpa	220℃
Oil	20A-80A	200rpm	1.8Mpa	350℃

### Mono flow



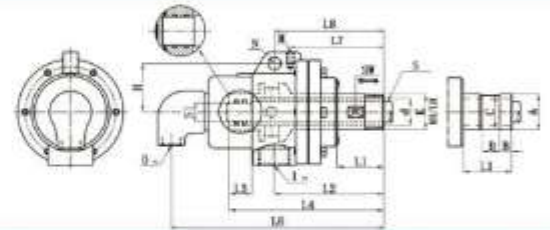
Model	K	O	d	L1	L6	L7	L8	M	N	SW	H	A	B	C	D
20A	R3/4"	Rc3/4"	18	46	201	96	/	M10	/	24	/	26	11	24	16
25A	R1"	Rc1"	23.5	52	216	111	/	M10	/	32	/	34	12	32	18
32A	R1-1/4"	Rc1-1/4"	30	55	255	121	138	M10	14	41	64	40	13	38	20
40A	R1-1/2"	Rc1-1/2"	36	65	295	128	149	M10	14	46	65	47.8	13	45	20
50A	R2"	Rc2"	45	70	320	150	173	M12	18	55	82	60	16	57	24
65A	R2-1/2"	Rc2-1/2"	58	76	360	157	183	M12	20	70	91	74	19	70	24
80A	R3"	Rc3"	72	85	420	185	213	M12	20	85	111	87	25	84	24

Dual flow  
fixed internal pipe



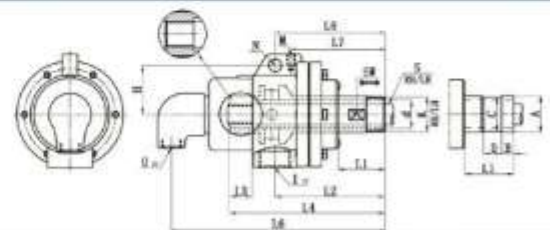
Model	K	I	O	S	d	L1	L2	L5	L8	L7	L8	M	N	SW	H	Dimensions			
																A	B	C	D
20A	R3/4"	Rc3/4"	Rc1/2"	Rp1/4"	18	46	104	182	199	96	/	M10	/	24	/	26	11	24	16
25A	R1"	Rc3/4"	Rc1/2"	Rp3/8"	23.5	52	111	196	213	111	/	M10	/	32	/	34	12	32	18
32A	R1-1/4"	Rc1"	Rc1/2"	Rp1/2"	30	55	136	238	255	121	136	M10	14	41	64	40	13	38	20
40A	R1-1/2"	Rc1-1/4"	Rc3/4"	Rp3/4"	36	65	148	272	290	128	149	M10	14	46	65	47.8	13	45	20
50A	R2"	Rc1-1/2"	Rc1"	Rp1"	45	70	161	292	316	150	173	M12	18	55	82	60	16	57	24
65A	R2-1/2"	Rc2"	Rc1-1/4"	Rp1-1/4"	58	76	178	333	357	157	183	M12	20	70	91	74	19	70	24
80A	R3"	Rc2-1/2"	Rc1-1/2"	Rp1-1/2"	72	85	261	395	420	185	213	M12	20	85	111	87	25	84	24

Dual flow  
rotating internal pipe RN



Model	K	I	O	St	d	L1	L2	L3	L4	L6	L7	L8	M	N	SW	H	Dimensions			
																	A	B	C	D
20A	R3/4"	Rc3/4"	Rc1/2"	12	18	46	104	20	139	199	96	/	M10	/	24	/	26	11	24	16
25A	R1"	Rc3/4"	Rc1/2"	16	23.5	52	111	20	151	213	111	/	M10	/	32	/	34	12	32	18
32A	R1-1/4"	Rc1"	Rc1/2"	20	30	55	136	25	184	255	121	136	M10	14	41	64	40	13	38	20
40A	R1-1/2"	Rc1-1/4"	Rc3/4"	25	36	65	148	30	200	290	128	149	M10	14	46	65	47.8	13	45	20
50A	R2"	Rc1-1/2"	Rc1"	32	45	70	161	40	223	316	150	173	M12	18	55	82	60	16	57	24
65A	R2-1/2"	Rc2"	Rc1-1/4"	40	58	76	178	45	251	357	157	183	M12	20	70	91	74	19	70	24
80A	R3"	Rc2-1/2"	Rc1-1/2"	46	72	85	261	45	324	420	185	213	M12	20	85	111	87	25	84	24

Dual flow  
rotating internal pipe RT



Model	K	I	O	S	d	L1	L2	L3	L4	L6	L7	L8	M	N	SW	H	Dimensions			
																	A	B	C	D
20A	R3/4"	Rc3/4"	Rc1/2"	Rp1/4"	18	46	104	20	139	199	96	/	M10	/	24	/	26	11	24	16
25A	R1"	Rc3/4"	Rc1/2"	Rp3/8"	23.5	52	111	20	151	213	111	/	M10	/	32	/	34	12	32	18
32A	R1-1/4"	Rc1"	Rc1/2"	Rp1/2"	30	55	136	25	184	255	121	136	M10	14	41	64	40	13	38	20
40A	R1-1/2"	Rc1-1/4"	Rc3/4"	Rp3/4"	36	65	148	30	200	290	128	149	M10	14	46	65	47.8	13	45	20
50A	R2"	Rc1-1/2"	Rc1"	Rp1"	45	70	161	40	223	316	150	173	M12	18	55	82	60	16	57	24
65A	R2-1/2"	Rc2"	Rc1-1/4"	Rp1-1/4"	58	76	178	45	251	357	157	183	M12	20	70	91	74	19	70	24
80A	R3"	Rc2-1/2"	Rc1-1/2"	Rp1-1/2"	72	85	261	45	324	420	185	213	M12	20	85	111	87	25	84	24



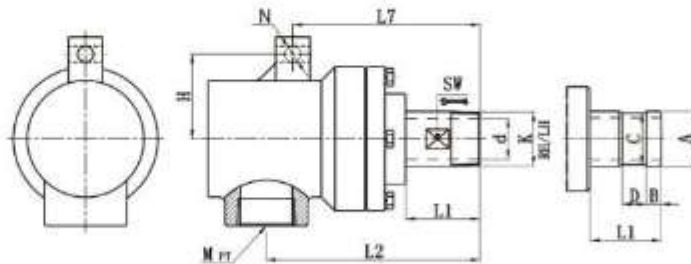
## TX/MR2 series of rotary joints

- Convex spherical seal
- Standard carbon graphite sealing technology
- Multiple widely spaced graphite bearing support
- Precision cast iron shell
- Mono-flow and dual-flow design
- Automatic centering
- Surface treatment of the rotating shaft for abrasion resistance and corrosion resistance
- Preventive maintenance design with sealing abrasion scale line
- Strong deflection adaptability

### Technical Parameter

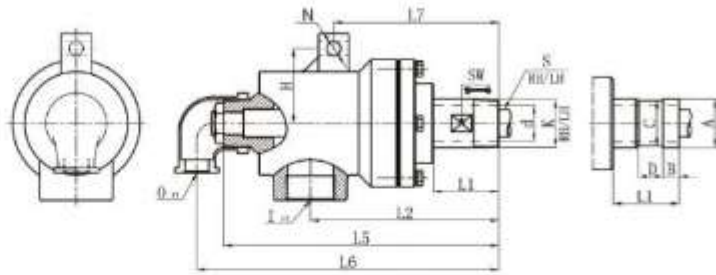
Media	Size	Max.Speed	Max.pressure	Max.Temperature
Steam	20A-50A	200rpm	1.8Mpa	220℃
Oil	20A-50A	200rpm	1.8Mpa	350℃

Mono flow



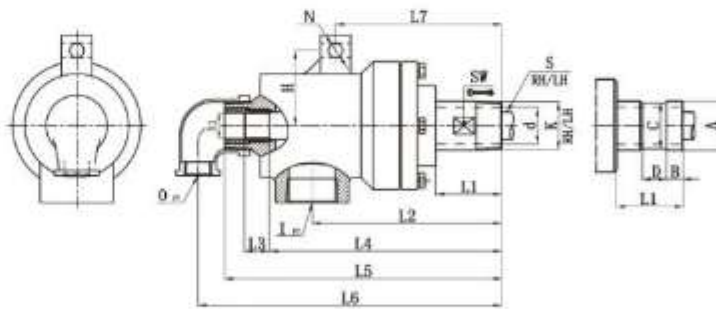
Model	K	M	d	L1	L2	L7	N	H	SW	A	B	C	D
20A	R3/4"	Rc3/4"	18	46	141	125	10	56	24	26	11	24	16
25A	R1"	Rc1"	23.5	52	146	131	12	60	32	34	12	32	18
32A	R1-1/4"	Rc1-1/4"	30	55	161	140	14	68	39	40	13	38	20
40A	R1-1/2"	Rc1-1/2"	38	65	186	163	14	74	45	47.8	13	45	20
50A	R2"	Rc2"	45	71	212	170	14	97	58	60	16	57	24

Dual flow  
fixed internal pipe



Model	K	I	O	S	d	L1	L2	L5	L6	L7	N	H	SW	A	B	C	D
														26	11	24	16
20A	R3/4"	Rc3/4"	Rc1/2"	Rp1/4"	18	46	141	197	214	125	10	56	24	26	11	24	16
25A	R1"	Rc3/4"	Rc1/2"	Rp3/8"	23.5	52	146	208	225	131	12	60	32	34	12	32	18
32A	R1-1/4"	Rc1"	Rc1/2"	Rp1/2"	30	55	161	239	256	140	14	68	39	40	13	38	20
40A	R1-1/2"	Rc1-1/4"	Rc3/4"	Rp3/4"	36	65	186	272	292	163	14	74	45	47.8	13	45	20
50A	R2"	Rc1-1/2"	Rc1"	Rp1"	45	71	212	290	315	170	14	97	58	60	16	57	24

Dual flow  
rotating internal pipe



Model	K	I	O	S1	d	L1	L2	L3	L4	L5	L6	L7	N	H	SW	A	B	C	D
																20	170	197	214
20A	R3/4"	Rc3/4"	Rc1/2"	12	18	46	141	20	170	197	214	125	10	56	24	26	11	24	16
25A	R1"	Rc3/4"	Rc1/2"	16	23.5	52	146	20	180	208	225	131	12	60	32	34	12	32	18
32A	R1-1/4"	Rc1"	Rc1/2"	20	30	55	161	20	197	239	256	140	14	68	39	40	13	38	20
40A	R1-1/2"	Rc1-1/4"	Rc3/4"	25	36	65	186	20	230	272	292	163	14	74	45	47.8	13	45	20
50A	R2"	Rc1-1/2"	Rc1"	32	45	71	212	16	251	290	315	170	14	97	58	60	16	57	24

Except for the above product specifications, our company's product can also be customized according to the user's requirements; Specifications are subject to change without notice.

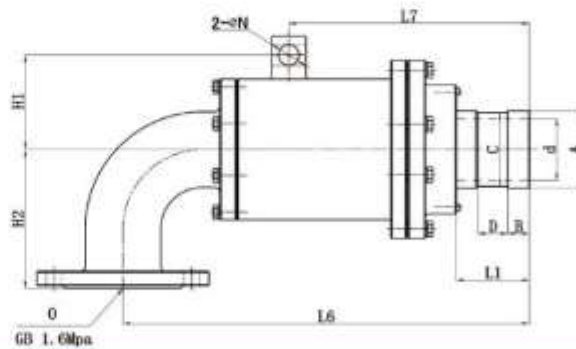
## MXQ flange rotor series of rotary joints

- Convex or concave spherical seal
- Standard antimony impregnated graphite or carbon graphite sealing technology
- Multiple graphite bearing support
- Multiple graphite bearing support
- Precision cast iron or carbon steel shell
- Automatic centering
- Flexible customized design on request
- Surface treatment of the rotating shaft for abrasion resistance and corrosion resistance
- Surface treatment of the rotating shaft for abrasion resistance and corrosion resistance
- Special products available for DN250 and above

### Technical Parameter

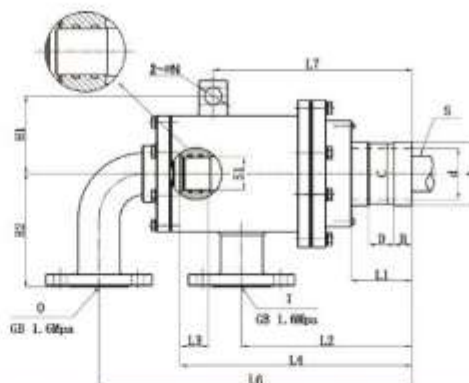
Media	Size	Max.Speed	Max.pressure	Max.Temperature
Steam	65A-150A	100rpm	1.8Mpa	220℃
Oil	65A-150A	100rpm	1.8Mpa	350℃

Mono flow



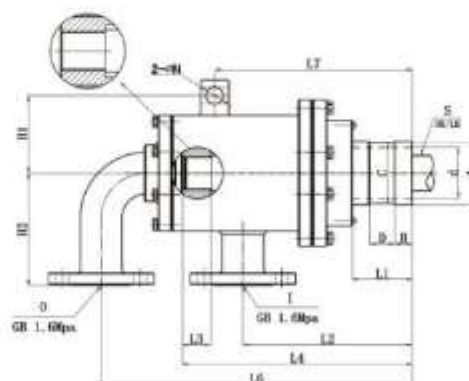
Model	O	d	L1	L6	L7	N	H1	H2				
									A	B	C	D
65A	DN65	58	75	415	230	18	106	165	74	19	70	24
80A	DN80	72	85	475	280	24	110	160	87	25	84	24
90A	DN80	80	100	500	305	25	116	170	100	25	96	30
100A	DN100	90	105	580	340	25	133	185	114	25	109	35
125A	DN125	116	120	680	390	30	158	230	148	25	142	35
150A	DN150	140	130	810	430	30	178	260	166	30	160	38

Dual flow  
rotating internal pipe RN



Model	I	O	d	S1	L1	L2	L3	L4	L6	L7	N	H1	H2	A	B	C	D
65A	DN40	DN32	58	40	75	195	30	266	415	230	18	106	165	74	19	70	24
80A	DN40	DN40	72	46	85	240	30	326	475	280	24	110	160	87	25	84	24
90A	DN50	DN50	80	58	100	245	35	346	500	305	25	116	170	100	25	96	30
100A	DN65	DN65	90	75	105	270	45	400	580	340	25	133	185	114	25	109	35
125A	DN80	DN80	116	85	120	325	45	468	680	390	30	158	230	148	25	142	35
150A	DN100	DN80	140	110	130	380	45	550	810	430	30	178	260	166	30	160	38

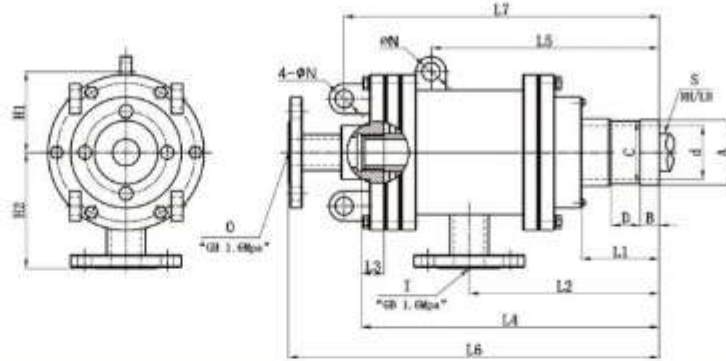
Dual flow  
rotating internal pipe RT



Model	I	O	d	S	L1	L2	L3	L4	L6	L7	N	H1	H2	A	B	C	D
65A	DN40	DN32	58	Rp1-1/4"	75	195	30	266	415	230	18	106	165	74	19	70	24
80A	DN40	DN40	72	Rp1-1/2"	85	240	30	326	475	280	24	110	160	87	25	84	24
90A	DN50	DN50	80	Rp2"	100	245	35	346	500	305	25	116	170	100	25	96	30
100A	DN65	DN65	90	Rp2-1/2"	105	270	45	400	580	340	25	133	185	114	25	109	35
125A	DN80	DN80	116	Rp3"	120	325	45	468	680	390	30	158	230	148	25	142	35
150A	DN100	DN80	140	Rp4"	130	380	45	550	810	430	30	178	260	166	30	160	38

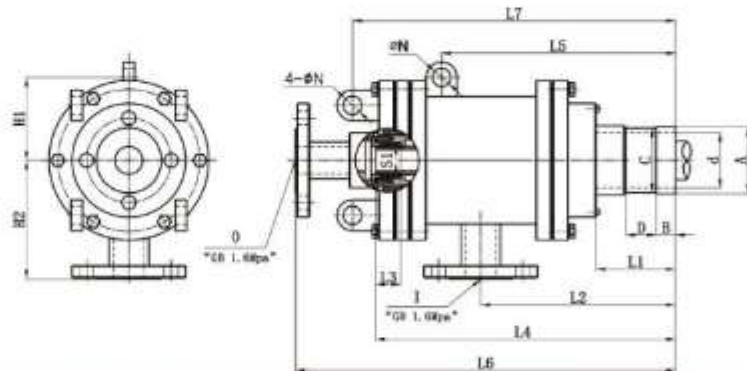


Dual flow  
fixed internal pipe



Model	I	O	d	S	L1	L2	L3	L4	L6	L7	N	H1	H2	A	B	C	D
65A	DN40	DN32	58	Rp1-1/4"	75	195	30	300	425	230	18	106	165	74	19	70	24
80A	DN40	DN40	72	Rp1-1/2"	85	240	30	360	485	280	24	110	160	87	25	84	24
90A	DN50	DN50	80	Rp2"	100	245	35	380	520	305	25	116	170	100	25	96	30
100A	DN65	DN65	90	Rp2-1/2"	105	270	45	450	600	340	25	133	185	114	25	109	35
125A	DN80	DN80	116	Rp3"	120	325	45	500	700	390	30	158	230	148	25	142	35
150A	DN100	DN80	140	Rp4"	130	380	45	600	840	430	30	178	260	166	30	160	38

Dual flow  
rotating internal pipe RN



Model	I	O	d	S1	L1	L2	L3	L4	L6	L7	N	H1	H2	A	B	C	D
65A	DN40	DN32	58	40	75	195	30	266	425	230	18	106	165	74	19	70	24
80A	DN40	DN40	72	46	85	240	30	326	485	280	24	110	160	87	25	84	24
90A	DN50	DN50	80	58	100	245	35	346	520	305	25	116	170	100	25	96	30
100A	DN65	DN65	90	75	105	270	45	400	600	340	25	133	185	114	25	109	35
125A	DN80	DN80	116	85	120	325	45	468	700	390	30	158	230	148	25	142	35
150A	DN100	DN80	140	110	130	380	45	550	840	430	30	178	260	166	30	160	38

Except for the above product specifications, our company's product can also be customized according to the user's requirements; Specifications are subject to change without notice.

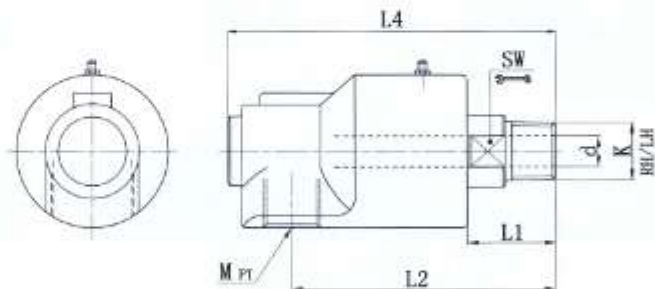
# MXPH series of rotary joints

- Plane sealing design
- Standard antimony impregnated graphite or carbon graphite sealing technology
- Balance design of metalloid composite friction or metalloid friction pairs
- Single spring design
- Self-supporting design
- Double bearing spacing support
- Copper alloy shell
- Mono-flow and dual-flow design
- Low torque

## Technical Parameter

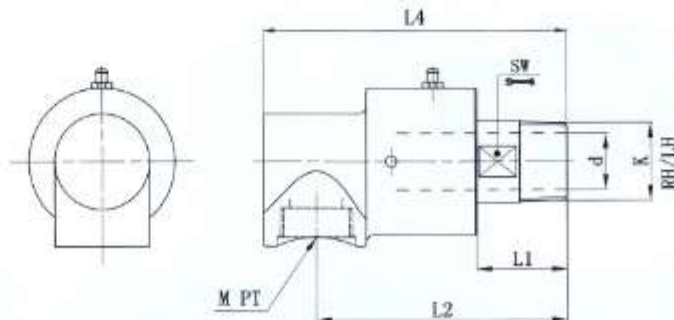
Media	Size	Max.Speed	Max.pressure	Max.Temperature
Water	10A、32A、50A	1500r/min	1.0Mpa	120℃
Oil	10A、32A、50A	1500r/min	1.0Mpa	260℃

Mono flow 10A



Model	K	M	d	L1	L2	L4	SW
10A	R3/8"	Rc3/8"	9	26	78	96	19

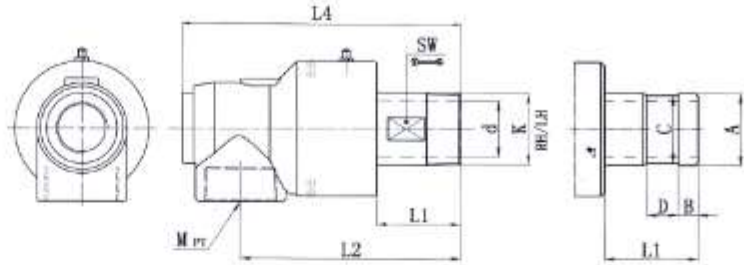
Mono flow 32A



Model	K	M	d	L1	L2	L4	SW
32A	R1-1/4"	Rc1-1/4"	30	48	134	162	41

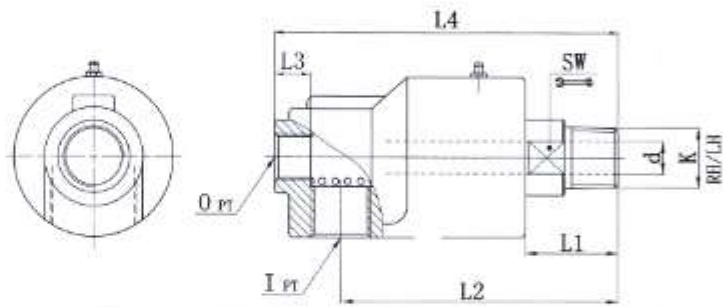


### Mono flow 50A



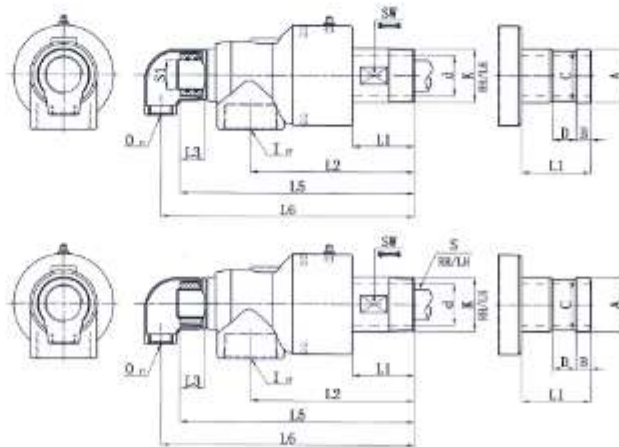
Model	K	M	d	L1	L2	L4	SW				
								A	B	C	D
50A	R2"	Rp2"	46	69	181	220	57	60	16	57	24

### Dual flow 10A



Model	K	I	O	d	L1	L2	L3	L4	SW
10A	R3/8"	Rc3/8"	Rp1/4"	9	26	78	10	96	19

### Dual flow 50A



Model	K	I	O	S	S1	d	L1	L2	L3	L5	L6	SW				
													A	B	C	D
50A	R2"	Rp2"	Rc1"	Rp1"	32	46	69	181	25	261	285	57	60	16	57	24

Except for the above product specifications, our company's product can also be customized according to the user's requirements. Specifications are subject to change without notice.



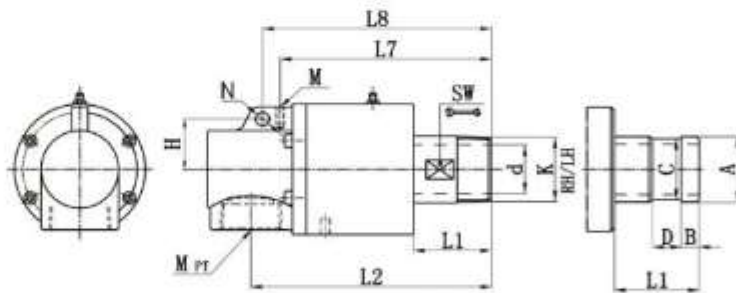
## MXB series of rotary joints

- Plane sealing design
- Multiple spring design
- Balance design with external springs
- Self-supporting design
- Standard antimony impregnated graphite or carbon graphite sealing technology
- Balance design of metalloid composite friction or metalloid friction pairs.
- Precision ball bearing support
- Mono-flow and dual-flow design
- High concentricity
- Low torque
- Applicable to high speed
- Split type design
- Ease of maintenance

### Technical Parameter

Media	Size	Max.Speed	Max.pressure	Max.Temperature
Water	15A-80A	3000rpm	1.0Mpa	120℃
Oil	15A-80A	3000rpm	1.0Mpa	300℃

Mono flow



Model	K	M	d	L1	L2	L7	L8	M	N	SW	H				
												A	B	C	D
15A	R1/2"	Rc1/2"	14	37	116	107	/	M6	/	22	/	/	/	/	/
20A	R3/4"	Rc3/4"	17	40	130	118	/	M6	/	26	/	26	11	24	16
25A	R1"	Rc1"	21	42	138	124	/	M6	/	31	/	34	12	32	18
32A	R1-1/4"	Rc1-1/4"	30	50	160	141	/	M8	/	41	/	40	13	38	20
40A	R1-1/2"	Rc1-1/2"	36	57	176	155	168	M6	10	46	37	47.8	13	45	20
50A	R2"	Rc2"	46	70	202	175	190	M8	10	57	42	60	16	57	24
65A	R2-1/2"	Rc2-1/2"	60	80	360	225	247	M10	14	72	65	74	19	70	24
80A	R3"	Rc3"	72	85	380	217	245	M12	18	87	73	87	25	84	24



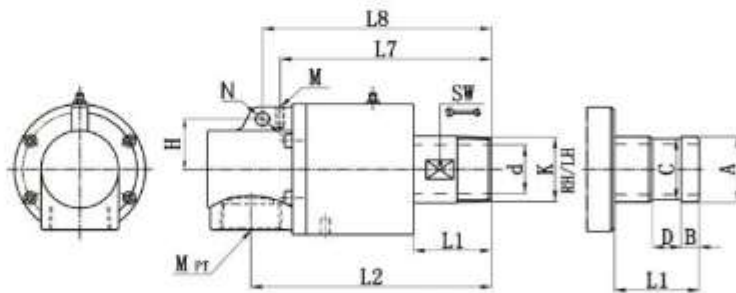
## MXB series of rotary joints

- Plane sealing design
- Multiple spring design
- Balance design with external springs
- Self-supporting design
- Standard antimony impregnated graphite or carbon graphite sealing technology
- Balance design of metalloid composite friction or metalloid friction pairs.
- Precision ball bearing support
- Mono-flow and dual-flow design
- High concentricity
- Low torque
- Applicable to high speed
- Split type design
- Ease of maintenance

### Technical Parameter

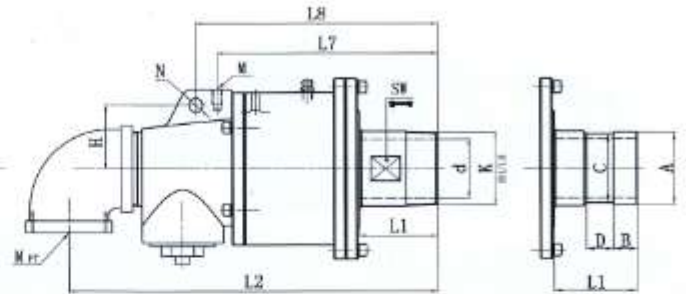
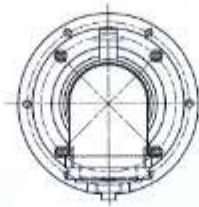
Media	Size	Max.Speed	Max.pressure	Max.Temperature
Water	15A-80A	3000rpm	1.0Mpa	120℃
Oil	15A-80A	3000rpm	1.0Mpa	300℃

Mono flow



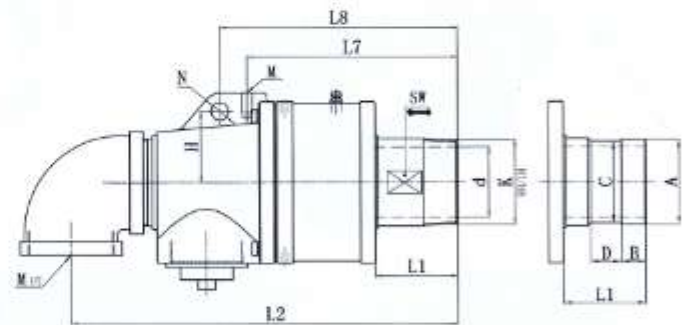
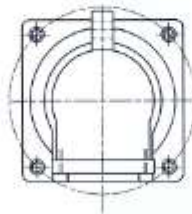
Model	K	M	d	L1	L2	L7	L8	M	N	SW	H				
												A	B	C	D
15A	R1/2"	Rc1/2"	14	37	116	107	/	M6	/	22	/	/	/	/	/
20A	R3/4"	Rc3/4"	17	40	130	118	/	M6	/	26	/	26	11	24	16
25A	R1"	Rc1"	21	42	138	124	/	M6	/	31	/	34	12	32	18
32A	R1-1/4"	Rc1-1/4"	30	50	160	141	/	M8	/	41	/	40	13	38	20
40A	R1-1/2"	Rc1-1/2"	36	57	176	155	168	M6	10	46	37	47.8	13	45	20
50A	R2"	Rc2"	46	70	202	175	190	M8	10	57	42	60	16	57	24
65A	R2-1/2"	Rc2-1/2"	60	80	360	225	247	M10	14	72	65	74	19	70	24
80A	R3"	Rc3"	72	85	380	217	245	M12	18	87	73	87	25	84	24

Mono flow 65A



Model	K	M	d	L1	L2	L7	L8	L9	M	N	H	SW	A	B	C	D
													74	19	70	24
65A	R2-1/2"	Rc2-1/2"	60	80	380	221	241	425	M10	14	62	72	74	19	70	24

Mono flow 80A

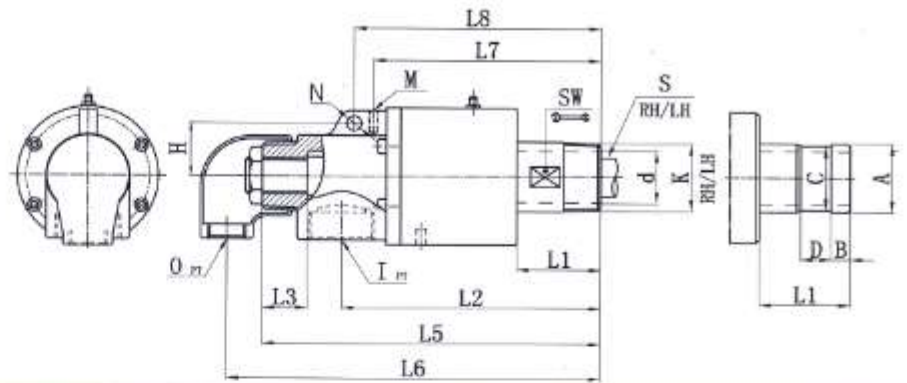


Model	K	M	d	L1	L2	L7	L8	L9	M	N	SW	H	A	B	C	D
													87	25	84	24
80A	R3"	Rc3"	72	85	398	217	245	450	M12	18	87	73	87	25	84	24

Except for the above product specifications, our company's product can also be customized according to the user's requirements: Specifications are subject to change without notice.

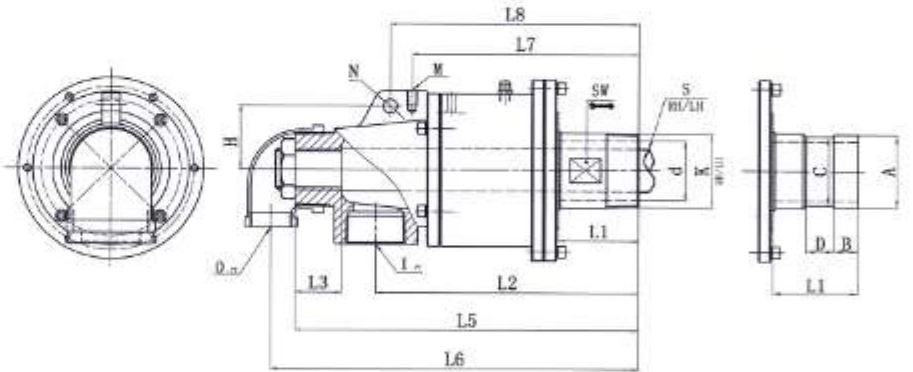


Dual flow  
fixed internal pipe



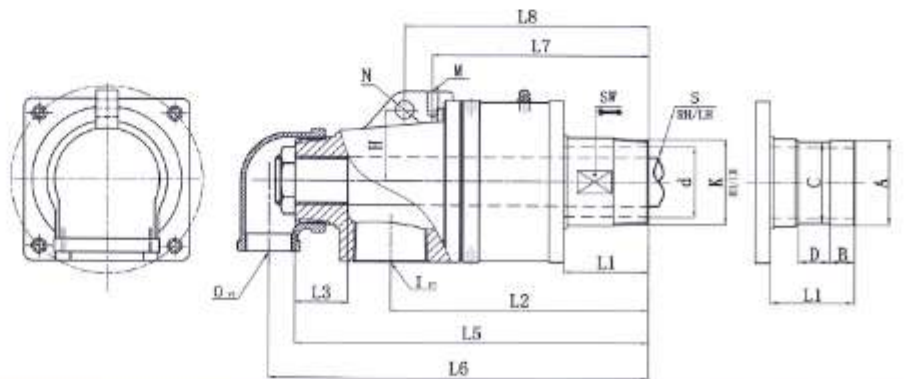
Model	K	I	O	S	d	L1	L2	L3	L5	L6	L7	L8	M	N	H	SW	A B C D			
																	A	B	C	D
20A	R3/4"	Rc3/4"	Rc1/2"	Rp1/4"	17	42	132	27	170	184	121	/	M6	/	/	26	26	11	24	16
25A	R1"	Rc3/4"	Rc1/2"	Rp3/8"	21	42	138	29	180	195	124	/	M6	/	/	32	34	12	32	18
32A	R1-1/4"	Rc1-1/4"	Rc1/2"	Rp1/2"	30	50	180	34	213	227	141	/	M6	/	/	41	40	13	38	20
40A	R1-1/2"	Rc1-1/2"	Rc3/4"	Rp3/4"	36	57	176	37	233	252	155	168	M6	10	37	46	47.8	13	45	20
50A	R2"	Rc1-1/2"	Rc1"	Rp1"	46	70	198	44	263	287	175	189	M8	10	44	57	60	16	57	24

Dual flow 65A  
fixed internal pipe



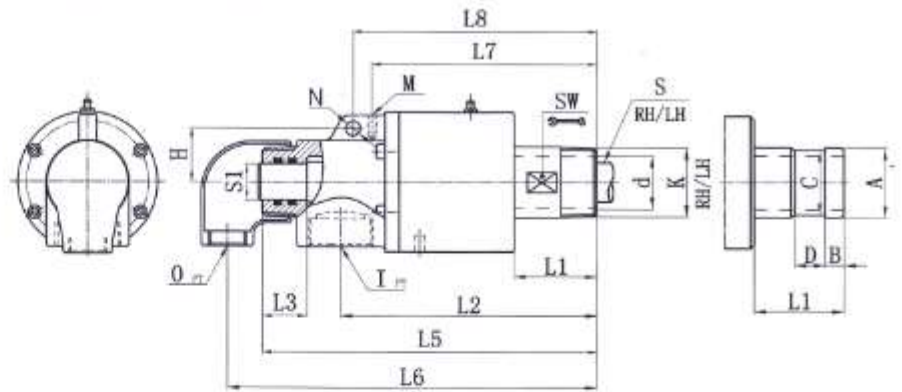
Model	K	I	O	S	d	L1	L2	L3	L5	L6	L7	L8	M	N	SW	H	A B C D			
																	A	B	C	D
65A	R2-1/2"	Rp2"	Rc1-1/4"	Rp1-1/4"	60	80	260	46	341	368	221	241	M10	14	72	62	74	19	70	24

Dual flow 80A  
fixed internal pipe



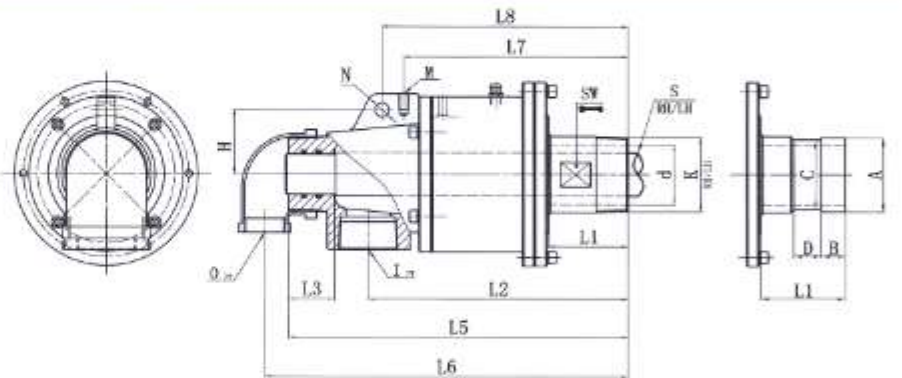
Model	K	I	O	S	d	L1	L2	L3	L5	L6	L7	L8	M	N	SW	H	A B C D			
																	A	B	C	D
80A	R3"	Rp2-1/2"	Rc1-1/2"	Rp1-1/2"	72	85	257	53	355	379	217	245	M12	18	87	73	87	25	84	24

Dual flow  
rotating internal pipe



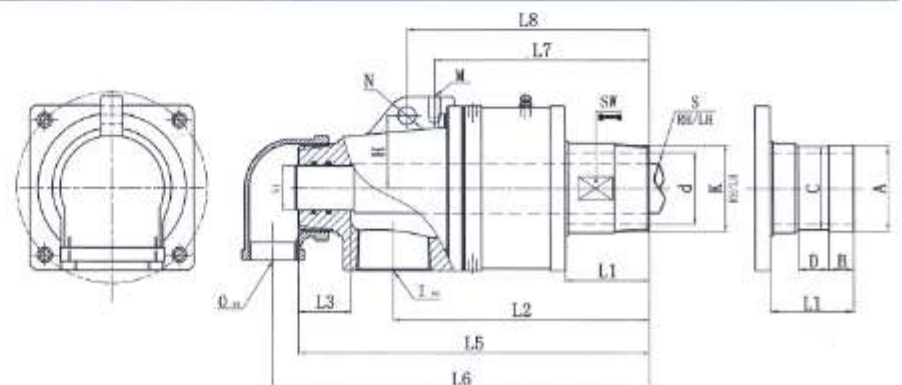
Model	K	I	O	S1	d	L1	L2	L3	L5	L6	L7	L8	M	N	H	SW	A B C D			
																	A	B	C	D
20A	R3/4"	Rc3/4"	Rc1/2"	12	17	42	132	27	170	184	121	/	M6	/	/	26	26	11	24	16
25A	R1"	Rc3/4"	Rc1/2"	16	21	42	138	29	180	195	124	/	M6	/	/	32	34	12	32	18
32A	R1-1/4"	Rc1-1/4"	Rc1/2"	20	30	50	160	34	213	227	141	/	M6	/	/	41	40	13	38	20
40A	R1-1/2"	Rc1-1/2"	Rc3/4"	25	36	57	176	37	233	252	155	168	M6	10	37	46	47.8	13	45	20
50A	R2"	Rc1-1/2"	Rc1"	32	46	70	196	44	263	287	175	189	M8	10	44	57	60	16	57	24

Dual flow 65A  
rotating internal pipe



Model	K	I	O	S1	d	L1	L2	L3	L5	L6	L7	L8	M	N	SW	H	A B C D			
																	A	B	C	D
65A	R2-1/2"	Rp2"	Rc1-1/4"	40	60	80	260	46	341	368	221	241	M10	14	72	62	74	19	70	24

Dual flow 80A  
rotating internal pipe



Model	K	I	O	S1	d	L1	L2	L3	L5	L6	L7	L8	M	N	SW	H	A B C D			
																	A	B	C	D
80A	R3"	Rp2-1/2"	Rc1-1/2"	46	72	85	257	53	355	379	217	245	M12	18	87	73	87	25	84	24



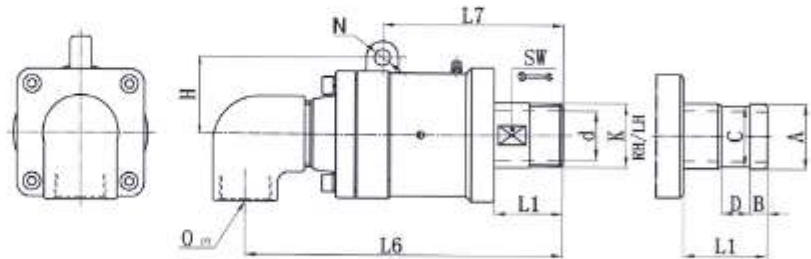
## MRTX series of rotary joints

- Balanced mechanical seal design
- Self-supporting design
- Standard antimony impregnated graphite or carbon graphite sealing technology
- Double bearing spacing support
- Cast iron shell
- Mono-flow and dual-flow design
- Perfect fluid design

### Technical Parameter

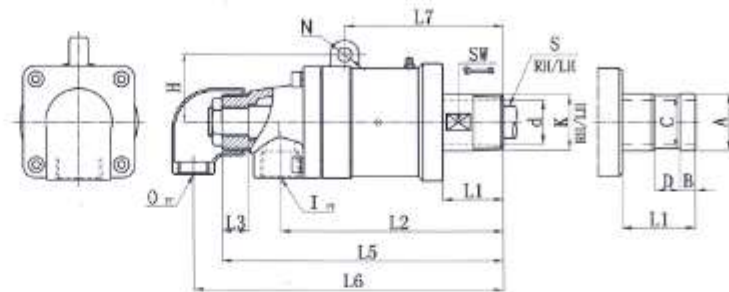
Media	Size	Max.Speed	Max.pressure	Max.Temperature
Water	20A-65A	2500r/min	1.0Mpa	120℃

Mono flow



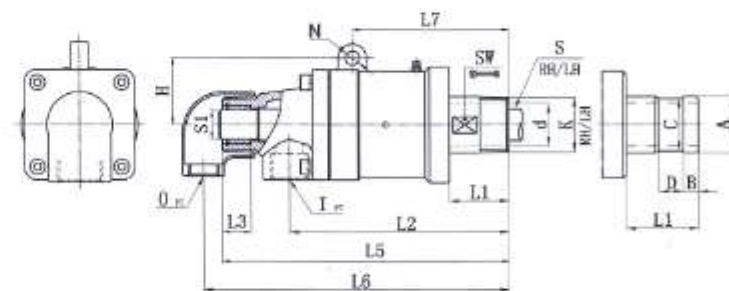
Model	K	O	d	L1	L6	L7	N	H	SW				
										A	B	C	D
20A	R3/4"	Rc3/4"	18	48	175	107	8	37	26	26	11	24	16
25A	R1"	Rc1"	22	50	184	112	10	44	30	34	12	32	18
32A	R1-1/4"	Rc1-1/4"	30	60	212	129	12	55	41	40	13	38	20
40A	R1-1/2"	Rc1-1/2"	36	64	235	149	12	57	45	47.8	13	45	20
50A	R2"	Rc2"	46	77	290	178	12	72	58	60	16	57	24
65A	R2-1/2"	Rc2-1/2"	60	88	325	207	14	92	70	74	19	70	24

Dual flow  
fixed internal pipe



Model	K	I	O	S	d	L1	L2	L3	L5	L6	L7	N	H	SW	A	B	C	D
20A	R3/4"	Rc1/2"	Rc1/2"	Rp1/4"	18	48	147	22	180	199	107	8	37	26	26	11	24	16
25A	R1"	Rc3/4"	Rc1/2"	Rp3/8"	22	50	153	27	198	213	112	10	44	30	34	12	32	18
32A	R1-1/4"	Rc1"	Rc1/2"	Rp1/2"	30	60	176	31	224	236	129	12	55	41	40	13	38	20
40A	R1-1/2"	Rc1"	Rc3/4"	Rp3/4"	36	64	197	33	255	272	149	12	57	45	47.8	13	45	20
50A	R2"	Rc1-1/2"	Rc1"	Rp1"	46	77	240	46	313	326	178	12	72	58	60	16	57	24
65A	R2-1/2"	Rc2"	Rc1-1/4"	Rp1-1/4"	60	88	273	52	358	386	207	14	92	70	74	19	70	24

Dual flow  
rotating internal pipe



Model	K	I	O	S1	d	L1	L2	L3	L5	L6	L7	N	H	SW	A	B	C	D
20A	R3/4"	Rc1/2"	Rc1/2"	12	18	48	147	19	180	199	107	8	37	26	26	11	24	16
25A	R1"	Rc3/4"	Rc1/2"	16	22	50	153	23	198	213	112	10	44	30	34	12	32	18
32A	R1-1/4"	Rc1"	Rc1/2"	20	30	60	176	25	224	236	129	12	55	41	40	13	38	20
40A	R1-1/2"	Rc1"	Rc3/4"	25	36	64	197	27	255	272	149	12	57	45	47.8	13	45	20
50A	R2"	Rc1-1/2"	Rc1"	32	46	77	240	38	313	326	178	12	72	58	60	16	57	24
65A	R2-1/2"	Rc2"	Rc1-1/4"	40	60	88	273	45	358	386	207	14	92	70	74	19	70	24

Except for the above product specifications, our company's product can also be customized according to the user's requirements; Specifications are subject to change without notice.



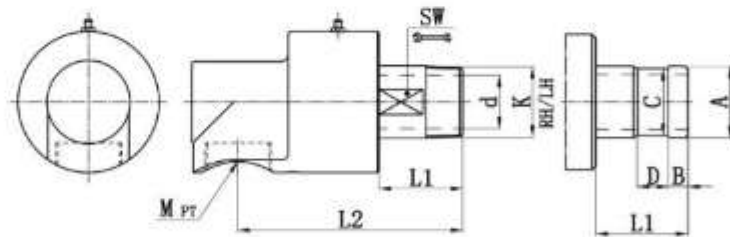
## RH series of rotary joints

- Plane sealing design
- Single spring design
- Self-supporting design
- Standard antimony impregnated graphite or carbon graphite sealing technology
- Balance design of metalloid composite friction or metalloid friction pairs
- Double bearing spacing support
- Copper alloy shell
- Mono-flow and dual-flow design
- Low torque

### Technical Parameter

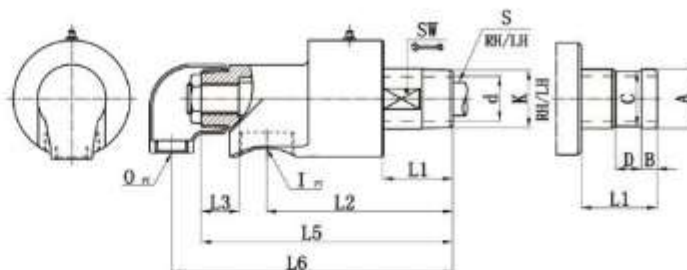
Media	Size	Max.Speed	Max.pressure	Max.Temperature
Water	15A-80A	1500rpm	1.0Mpa	120°C
Oil	15A-80A	1500rpm	1.0Mpa	260°C

### Mono flow



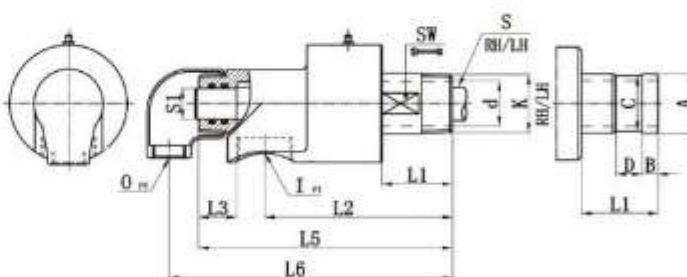
Model	K	M	d	L1	L2	SW	A	B	C	D
15A	R1/2"	Rc1/2"	14	35	99	20	/	/	/	/
20A	R3/4"	Rc3/4"	17	38	107	26	26	11	24	16
25A	R1"	Rc1"	21	41	116	31	34	12	32	18
40A	R1-1/2"	Rc1-1/2"	36	57	152	46	47.8	13	45	20
65A	R2-1/2"	Rc2-1/2"	60	80	218	80	74	19	70	24
80A	R3"	Rc3"	72	85	236	87	87	25	84	24

Dual flow  
fixed internal pipe



Model	K	I	O	S	d	L1	L2	L3	L5	L6	SW	A	B	C	D
												/	/	/	/
15A	R1/2"	Rc1/2"	Rc1/2"	Rp1/8"	14	35	99	18	135	152	20	/	/	/	/
20A	R3/4"	Rc3/4"	Rc1/2"	Rp1/4"	17	38	107	20	147	162	26	26	11	24	16
25A	R1"	Rc3/4"	Rc1/2"	Rp3/8"	21	41	116	20	155	172	31	34	12	32	18
32A	R1-1/4"	Rc1-1/4"	Rc1/2"	Rp1/2"	30	48	138	25	194	216	41	40	13	38	20
40A	R1-1/2"	Rc1-1/2"	Rc3/4"	Rp3/4"	36	57	152	30	210	232	46	47.8	13	45	20
65A	R2-1/2"	Rc2"	Rc1-1/4"	Rp1-1/4"	60	80	218	45	300	338	80	74	19	70	24
80A	R3"	Rc2-1/2"	Rc1-1/2"	Rp1-1/2"	72	85	236	50	325	358	87	87	25	84	24

Dual flow  
rotating internal pipe

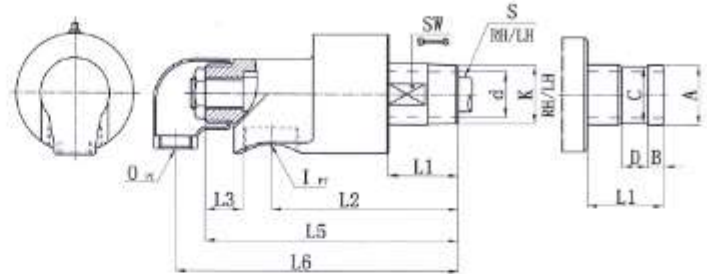


Model	K	I	O	S1	d	L1	L2	L3	L5	L6	SW	A	B	C	D
				10								12	16	20	25
15A	R1/2"	Rc1/2"	Rc1/2"	10	14	35	99	18	135	152	20	/	/	/	/
20A	R3/4"	Rc3/4"	Rc1/2"	12	17	38	107	20	147	162	26	26	11	24	16
25A	R1"	Rc3/4"	Rc1/2"	16	21	41	116	20	155	172	31	34	12	32	18
32A	R1-1/4"	Rc1-1/4"	Rc1/2"	20	30	48	138	25	194	216	41	40	13	38	20
40A	R1-1/2"	Rc1-1/2"	Rc3/4"	25	36	57	152	30	210	232	46	47.8	13	45	20
65A	R2-1/2"	Rc2"	Rc1-1/4"	40	60	80	218	45	300	338	80	74	19	70	24
80A	R3"	Rc2-1/2"	Rc1-1/2"	46	72	85	236	50	325	358	87	87	25	84	24

Except for the above product specifications, our company's product can also be customized according to the user's requirements. Specifications are subject to change without notice.

Dual flow

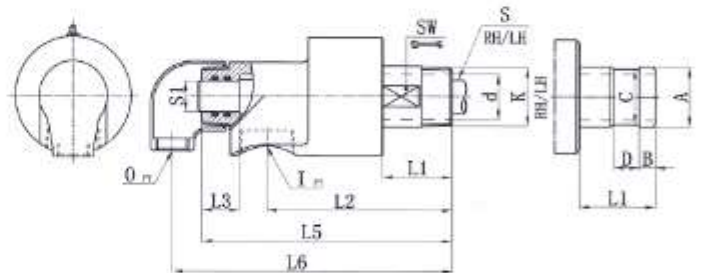
fixed internal pipe



Model	K	I	O	S	d	L1	L2	L3	L5	L6	SW				
												A	B	C	D
15A	R1/2"	Rc1/2"	Rc1/2"	Rp1/8"	13	29	85	22	119	134	20	/	/	/	/
20A	R3/4"	Rc3/4"	Rc1/2"	Rp1/4"	17	39	103	24	139	155	26	26	11	24	16
25A	R1"	Rc3/4"	Rc1/2"	Rp3/8"	21	49	118	20	155	171	31	34	12	32	18
32A	R1-1/4"	Rc1-1/4"	Rc1/2"	Rp1/2"	30	51	134	29	182	198	41	40	13	38	20
40A	R1-1/2"	Rc1-1/2"	Rc3/4"	Rp3/4"	36	58	145	31	198	220	46	47.8	13	45	20
50A	R2"	Rc1-1/2"	Rc1"	Rp1"	46	71	192	33	249	282	57	60	16	57	24
65A	R2-1/2"	Rc2"	Rc1-1/4"	Rp1-1/4"	60	79	214	45	289	316	80	74	19	70	24
80A	R3"	Rc2-1/2"	Rc1-1/2"	Rp1-1/2"	72	85	231	49	322	349	87	87	25	84	24

Dual flow

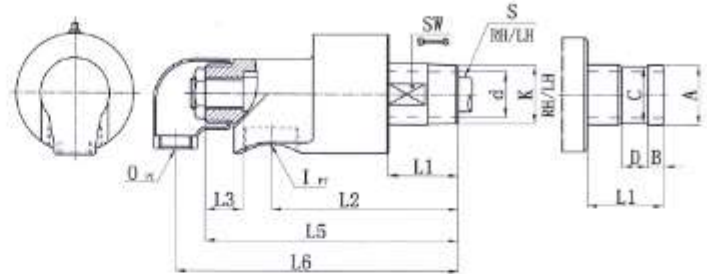
rotating internal pipe



Model	K	I	O	S1	d	L1	L2	L3	L5	L6	SW				
												A	B	C	D
15A	R1/2"	Rc1/2"	Rc1/2"	10	13	29	85	22	119	134	20	/	/	/	/
20A	R3/4"	Rc3/4"	Rc1/2"	12	17	39	103	24	139	155	26	26	11	24	16
25A	R1"	Rc3/4"	Rc1/2"	16	21	49	118	20	155	171	31	34	12	32	18
32A	R1-1/4"	Rc1-1/4"	Rc1/2"	20	30	51	134	29	182	198	41	40	13	38	20
40A	R1-1/2"	Rc1-1/2"	Rc3/4"	25	36	58	145	31	198	220	46	47.8	13	45	20
50A	R2"	Rc1-1/2"	Rc1"	32	46	71	192	33	249	282	57	60	16	57	24
65A	R2-1/2"	Rc2"	Rc1-1/4"	40	60	79	214	45	289	316	80	74	19	70	24
80A	R3"	Rc2-1/2"	Rc1-1/2"	46	72	85	231	49	322	349	87	87	25	84	24

Dual flow

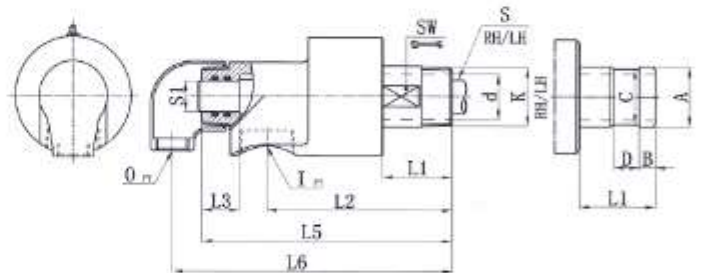
fixed internal pipe



Model	K	I	O	S	d	L1	L2	L3	L5	L6	SW				
												A	B	C	D
15A	R1/2"	Rc1/2"	Rc1/2"	Rp1/8"	13	29	85	22	119	134	20	/	/	/	/
20A	R3/4"	Rc3/4"	Rc1/2"	Rp1/4"	17	39	103	24	139	155	26	26	11	24	16
25A	R1"	Rc3/4"	Rc1/2"	Rp3/8"	21	49	118	20	155	171	31	34	12	32	18
32A	R1-1/4"	Rc1-1/4"	Rc1/2"	Rp1/2"	30	51	134	29	182	198	41	40	13	38	20
40A	R1-1/2"	Rc1-1/2"	Rc3/4"	Rp3/4"	36	58	145	31	198	220	46	47.8	13	45	20
50A	R2"	Rc1-1/2"	Rc1"	Rp1"	46	71	192	33	249	282	57	60	16	57	24
65A	R2-1/2"	Rc2"	Rc1-1/4"	Rp1-1/4"	60	79	214	45	289	316	80	74	19	70	24
80A	R3"	Rc2-1/2"	Rc1-1/2"	Rp1-1/2"	72	85	231	49	322	349	87	87	25	84	24

Dual flow

rotating internal pipe



Model	K	I	O	S1	d	L1	L2	L3	L5	L6	SW				
												A	B	C	D
15A	R1/2"	Rc1/2"	Rc1/2"	10	13	29	85	22	119	134	20	/	/	/	/
20A	R3/4"	Rc3/4"	Rc1/2"	12	17	39	103	24	139	155	26	26	11	24	16
25A	R1"	Rc3/4"	Rc1/2"	16	21	49	118	20	155	171	31	34	12	32	18
32A	R1-1/4"	Rc1-1/4"	Rc1/2"	20	30	51	134	29	182	198	41	40	13	38	20
40A	R1-1/2"	Rc1-1/2"	Rc3/4"	25	36	58	145	31	198	220	46	47.8	13	45	20
50A	R2"	Rc1-1/2"	Rc1"	32	46	71	192	33	249	282	57	60	16	57	24
65A	R2-1/2"	Rc2"	Rc1-1/4"	40	60	79	214	45	289	316	80	74	19	70	24
80A	R3"	Rc2-1/2"	Rc1-1/2"	46	72	85	231	49	322	349	87	87	25	84	24



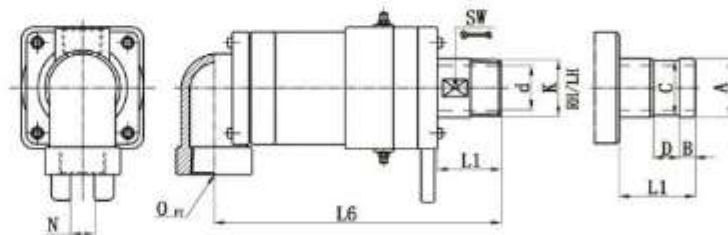
## D series of rotary joints

- Double plane sealing design
- Balance design with external springs
- Bellow compensation design
- Design of composite elastic cells
- Self-supporting design
- Standard antimony impregnated graphite or carbon graphite sealing technology
- Balance design of metalloid composite friction or metalloid friction pairs
- Double bearing spacing support
- Precision cast iron shell
- Mono-flow and dual-flow design
- Perfect fluid design

### Technical Parameter

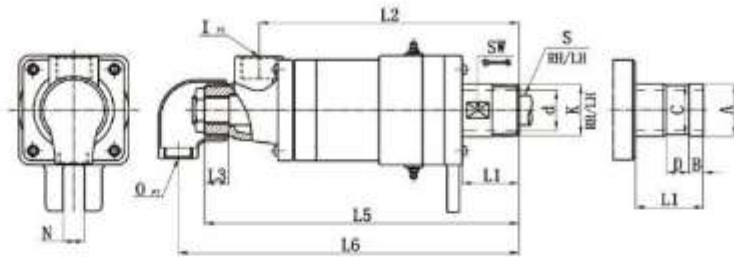
Media	Size	Max.Speed	Max.pressure	Max.Temperature
Water	15A-80A	500rpm	1.8Mpa	200℃
Oil				
Steam				
Hot Water				
Air				

Mono flow



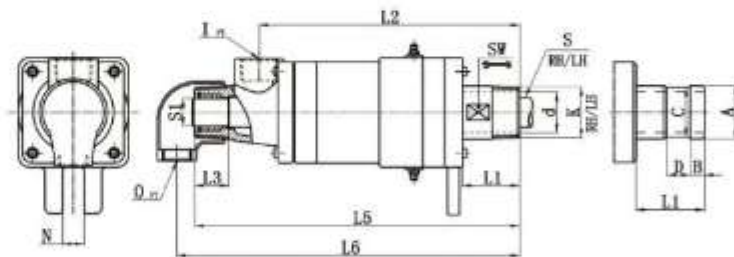
Model	K	M	d	L1	L6	N	SW	A	B	C	D
15A	R1/2"	Rc1/2"	12	35	164	15	18	/	/	/	/
20A	R3/4"	Rc3/4"	18	46	180	20	24	26	11	24	16
25A	R1"	Rc1"	24	52	204	20	32	34	12	32	18
32A	R1-1/4"	Rc1-1/4"	30	55	239	20	41	40	13	38	20
40A	R1-1/2"	Rc1-1/2"	34	65	239	20	46	47.8	13	45	20
50A	R2"	Rc2"	46	70	268	20	55	60	16	57	24
65A	R2-1/2"	Rc2-1/2"	60	75	319	25	70	74	19	70	24
80A	R3"	Rc3"	72	85	346	30	85	87	25	84	24

Dual flow  
fixed internal pipe



Model	K	I	O	S	d	L1	L2	L3	L5	L6	N	SW	A	B	C	D
													/	/	/	/
15A	R1/2"	Rc1/2"	Rc1/2"	Rp1/8"	12	35	165	18	202	198	15	18	/	/	/	/
20A	R3/4"	Rc3/4"	Rc1/2"	Rp1/4"	18	46	181	20	225	221	20	24	26	11	24	16
25A	R1"	Rc1"	Rc1/2"	Rp3/8"	24	52	205	20	259	255	20	32	34	12	32	18
32A	R1-1/4"	Rc1"	Rc1/2"	Rp1/2"	30	55	231	25	287	283	20	41	40	13	38	20
40A	R1-1/2"	Rc1-1/2"	Rc3/4"	Rp3/4"	34	65	231	30	287	283	20	46	47.8	13	45	20
50A	R2"	Rc1-1/2"	Rc1"	Rp1"	46	70	267	40	337	333	20	55	60	16	57	24
65A	R2-1/2"	Rc2"	Rc1-1/4"	Rp1-1/4"	60	75	314	45	386	382	25	70	74	19	70	24
80A	R3"	Rc2"	Rc1-1/2"	Rp1-1/2"	72	85	327	50	415	411	30	85	87	25	84	24

Dual flow  
rotating internal pipe



Model	K	I	O	S1	d	L1	L2	L3	L5	L6	N	SW	A	B	C	D
				10									12	16	20	25
15A	R1/2"	Rc1/2"	Rc1/2"	10	12	35	165	18	202	198	15	18	/	/	/	/
20A	R3/4"	Rc3/4"	Rc1/2"	12	18	46	181	20	225	221	20	24	26	11	24	16
25A	R1"	Rc1"	Rc1/2"	16	24	52	205	20	259	255	20	32	34	12	32	18
32A	R1-1/4"	Rc1"	Rc1/2"	20	30	55	231	25	287	283	20	41	40	13	38	20
40A	R1-1/2"	Rc1-1/2"	Rc3/4"	25	34	65	231	30	287	283	20	46	47.8	13	45	20
50A	R2"	Rc1-1/2"	Rc1"	32	46	70	267	40	337	333	20	55	60	16	57	24
65A	R2-1/2"	Rc2"	Rc1-1/4"	40	60	75	314	45	386	382	25	70	74	19	70	24
80A	R3"	Rc2"	Rc1-1/2"	46	72	85	327	50	415	411	30	85	87	25	84	24

Except for the above product specifications, our company's product can also be customized according to the user's requirements: Specifications are subject to change without notice.

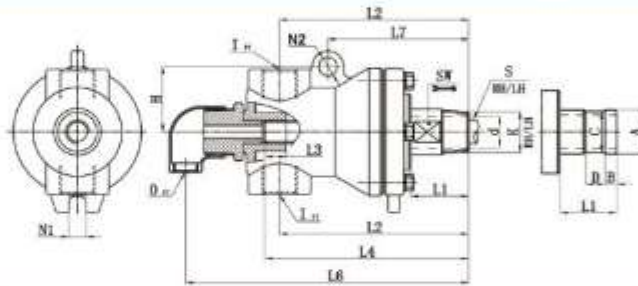


## MEQ series of rotary joints

- Concave spherical seal
- Standard carbon graphite sealing technology
- Double widely spaced graphite bearing support
- Precision cast iron shell
- Dual-flow design
- Automatic centering
- Strong deflection adaptability

### Technical Parameter

Media	Size	Max.Speed	Max.pressure	Max.Temperature
Steam	25A-32A	300rpm	1.8Mpa	220℃



Model	K	I	O	S	d	L1	L2	L3	L4	L5	L7	N1	N2	SW	H
25A	M36 x 4	Rc3/4"	Rc1/2"	Rp3/8"	23.5	46	147	18	158	220	110	13	14	32	50
32A	M45 x 3	Rc1"	Rc1/2"	Rp1/2"	30	55	180	20	195	260	136	15	16	41	58

Except for the above product specifications, our company's product can also be customized according to the user's requirements. Specifications are subject to change without notice.

## TM308 series of rotary joints

- Convex spherical seal
- Standard carbon graphite sealing technology
- Precision cast iron shell
- Automatic centering
- Strong deflection adaptability
- Dual-flow design

### Technical Parameter

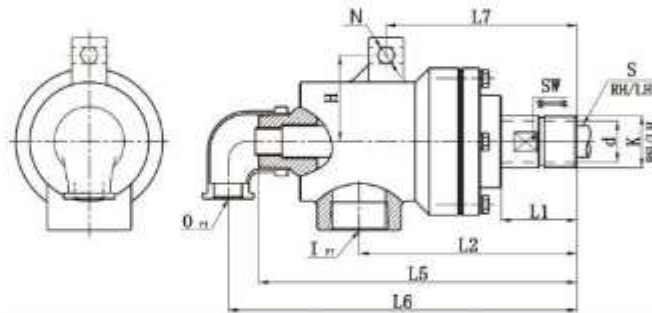
Media	Size	Max.Speed	Max.pressure	Max.Temperature
Steam	25A	100rpm	1.8Mpa	220℃

# TX series of rotary joints

- Convex spherical seal
- Standard carbon graphite sealing technology
- Multiple widely spaced graphite bearing support
- Precision cast iron shell
- Mono-flow and dual-flow design
- Automatic centering
- Surface treatment of the rotating shaft for abrasion resistance and corrosion resistance
- Preventive maintenance design with sealing abrasion scale line
- Strong deflection adaptability

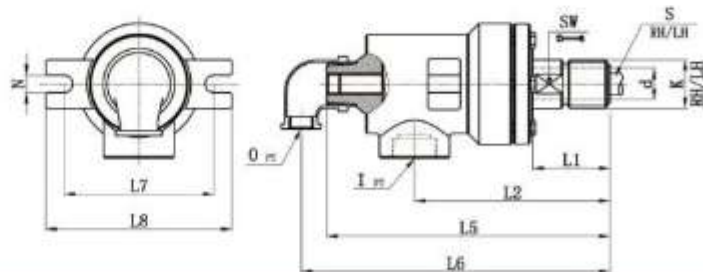
## Technical Parameter

Media	Size	Max.Speed	Max.pressure	Max.Temperature
Steam	32A	200rpm	1.8Mpa	220°C



Model	K	I	O	S	d	L1	L2	L5	L6	L7	N	H	SW
32A	M45 x 3	Rc1"	Rc1/2"	Rp1/2"	30	55	161	239	256	140	14	68	41

Except for the above product specifications, our company's product can also be customized according to the user's requirements;Specifications are subject to change without notice.



Model	K	I	O	S	d	L1	L2	L5	L6	L7	L8	N	SW
25A	M36 x 4	Rc3/4"	Rc1/2"	M12 x 1.5 M16 x 1.5	22	60	146	210	235	111	138	13	32

Except for the above product specifications, our company's product can also be customized according to the user's requirements;Specifications are subject to change without notice.

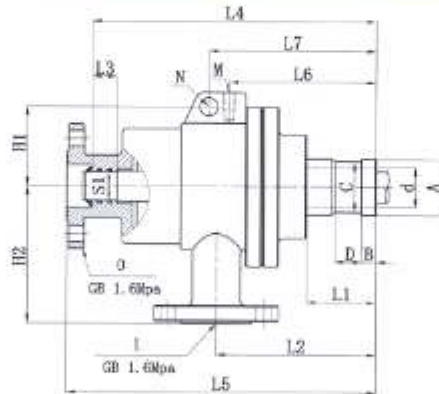


## MXQ flange rotor series of rotary joints

- Convex or concave spherical seal
- Standard antimony impregnated graphite or carbon graphite sealing technology
- Precision cast iron shell
- Automatic centering
- Strong deflection adaptability

### Technical Parameter

Media	Size	Max.Speed	Max.pressure	Max.Temperature
Steam	25A、40A	250r/min	1.8Mpa	220℃
Oil	25A、40A	250r/min	1.8Mpa	350℃



Model	I	O	S1	d	L1	L2	L3	L4	L5	L6	L7	N	M	H1	H2				
																A	B	C	D
25A	DN15	DN15	15	23.5	53	112	30	197	213	110	/	/	M10	/	100	34	10	32	18
40A	DN25	DN25	25	36	63	143	22	254	277	132	150	16	M10	71	122	49.8	13	45	20

Except for the above product specifications, our company's product can also be customized according to the user's requirements. Specifications are subject to change without notice.

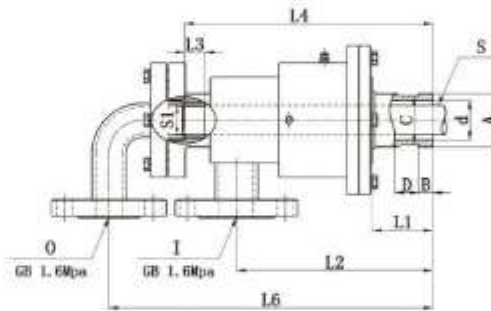


## RHG series of rotary joints

- Plane sealing design
- Standard antimony impregnated carbon graphite sealing technology
- Self-supporting design
- Double high temperature bearing spacing support
- Precision cast iron or carbon steel shell
- Split type design

### Technical Parameter

Media	Size	Max.Speed	Max.pressure	Max.Temperature
Oil	40A-80A	600rpm	1.0Mpa	260℃



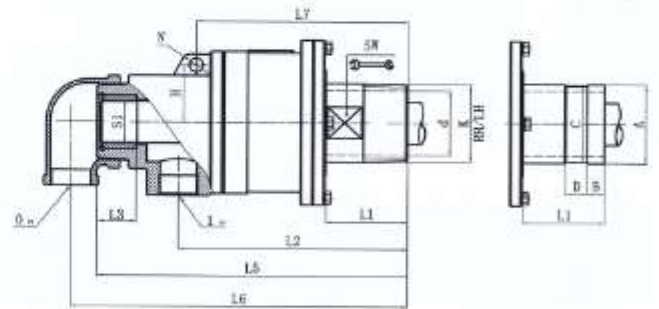
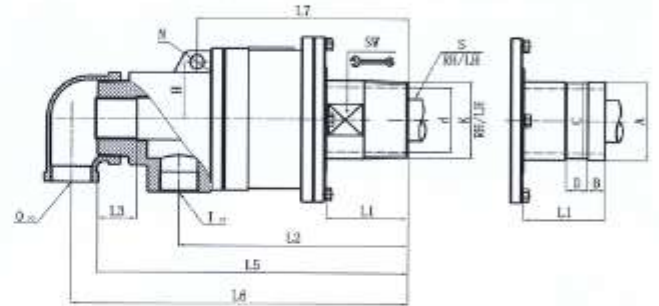
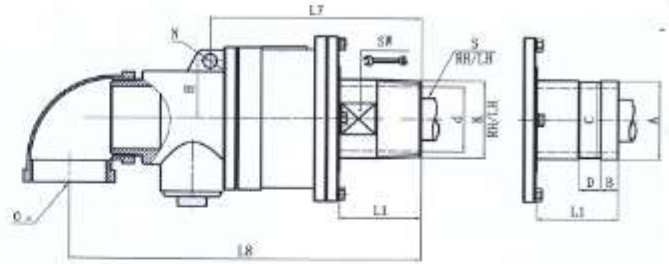
Model	I	O	d	S1	L1	L2	L3	L4	L6	H				
											A	B	C	D
40A	DN32	DN25	36	25	65	195	28	256	335	97	47.8	13	45	20
50A	DN32	DN32	45	32	70	224	28	280	365	103	60	16	57	24
65A	DN40	DN32	58	40	76	240	30	300	385	125	74	19	70	24
80A	DN40	DN40	72	46	80	252	50	343	343	130	87	25	84	24

Except for the above product specifications, our company's product can also be customized according to the user's requirements. Specifications are subject to change without notice.



# MXB2 series of rotary joints

- Plane sealing design
- Multiple spring design
- Balance design with external springs
- Standard antimony impregnated graphite or carbon graphite sealing technology
- Balance design of metalloïd composite friction or metalloïd friction pairs
- Cast iron shell



### Technical Parameter

Media	Size	Max.Speed	Max.pressure	Max.Temperature
Water	80A	500r/min	1.0Mpa	100℃
Oil	80A	500r/min	1.0Mpa	300℃



Model	K	M	I	O	S	S1	d1	L1	L2	L3	L5	L6	L7	L8	N	SW	H	A	B	C	D
80A	R3"	Rc3"	Rc1-1/2"	Rc1-1/2"	Rc1-1/2"	47	74	94	263	38	350	387	243	405	16	85	66	90	20	87	25

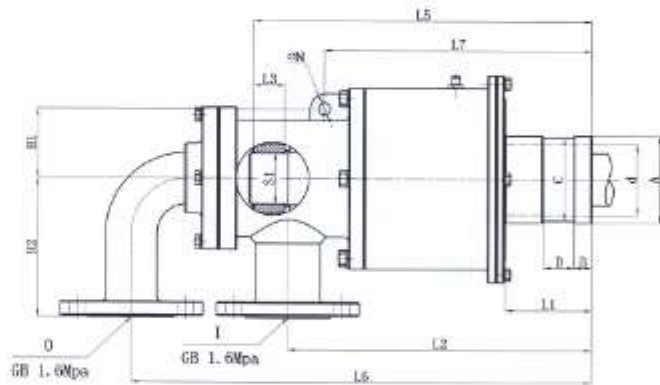
Except for the above product specifications, our company's product can also be customized according to the user's requirements. Specifications are subject to change without notice.

# MXB flange rotor series of rotary joints

- Plane sealing design
- Multiple spring design
- Balance design with external springs
- Multiple graphite bearing support
- Flexible customized design on request
- Special products available for DN150 and above

## Technical Parameter

Media	Size	Max.Speed	Max.pressure	Max.Temperature
Water	90A-150A	300r/min	1.0Mpa	100℃
Oil	90A-150A	300r/min	1.0Mpa	300℃



Model	I	O	S1	d	L1	L2	L3	L5	L6	L7	N	H1	H2				
														A	B	C	D
90A	DN50	DN50	58	80	92	304	36	382	486	284	14	95	155	100	20	95	25
100A	DN65	DN65	75	96	96	330	36	410	566	284	18	97	170	112	22	109	30
125A	DN80	DN80	85	120	120	397	45	473	677	343	20	110	210	148	25	142	35
150A	DN125	DN100	110	145	118	468	50	600	807	540	36	110	260	180	15	174	38

Except for the above product specifications, our company's product can also be customized according to the user's requirements. Specifications are subject to change without notice.

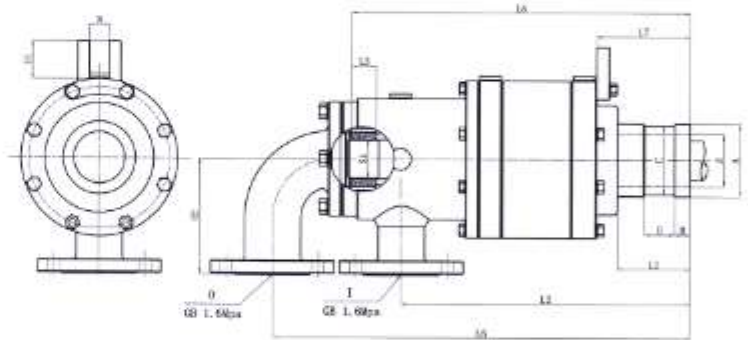


# PS020 series of rotary joints

- Plane sealing design
- Multiple spring design
- Balance design with external springs
- Multiple graphite bearing support
- Automatic centering
- Can be added with cooling cycle system, suitable for high temperature conditions

## Technical Parameter

Media	Size	Max.Speed	Max.pressure	Max.Temperature
Oil	100A-125A	650r/min	1.0Mpa	300℃



Model	I	O	S1	d	L1	L2	L3	L5	L6	L7	N	H1	H2	A	B	C	D
														100A	DN65	DN65	58
125A	DN80	DN80	75	98	126	500	50	599	732	158	32	55	195	135	25	130	35

Except for the above product specifications, our company's product can also be customized according to the user's requirements; Specifications are subject to change without notice.